

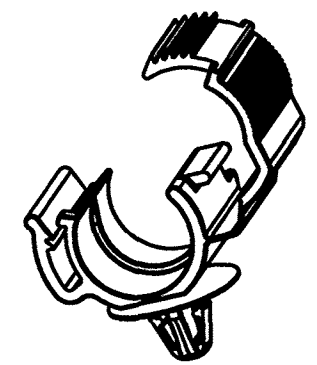
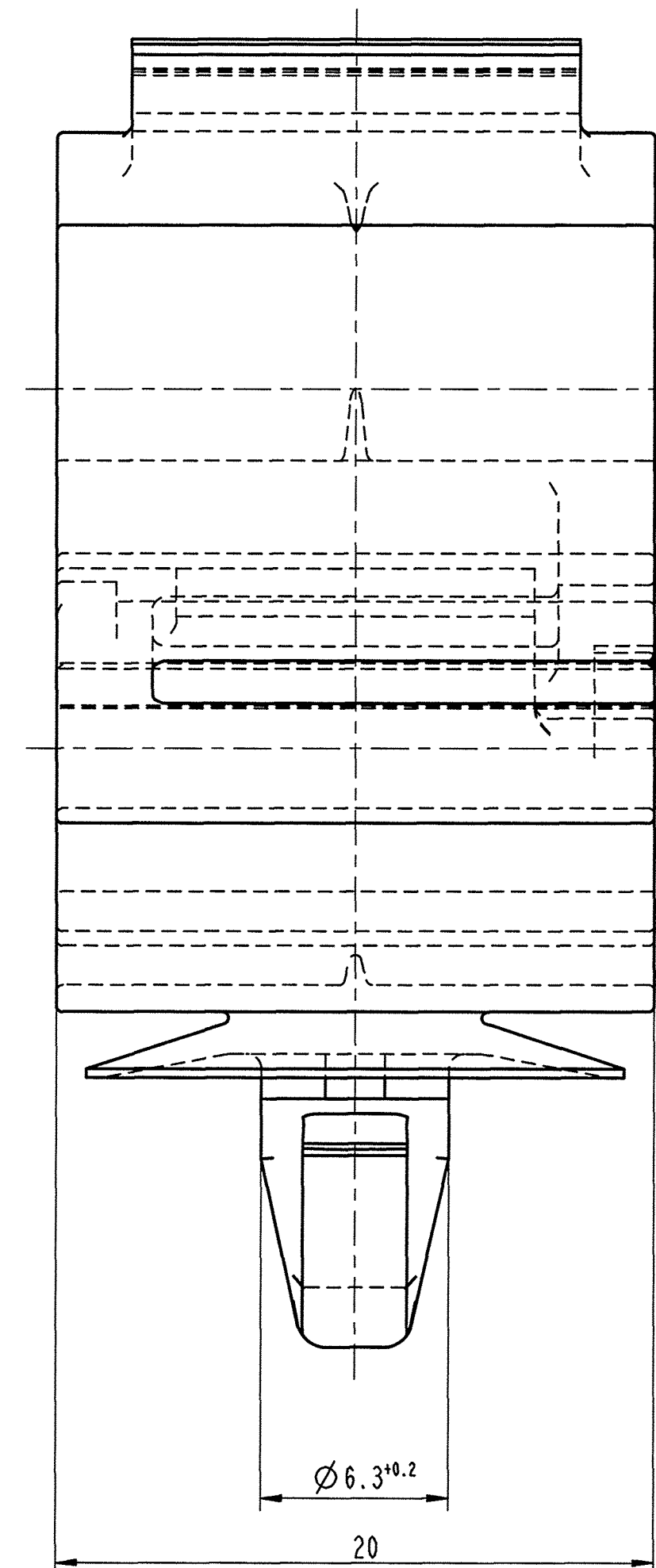
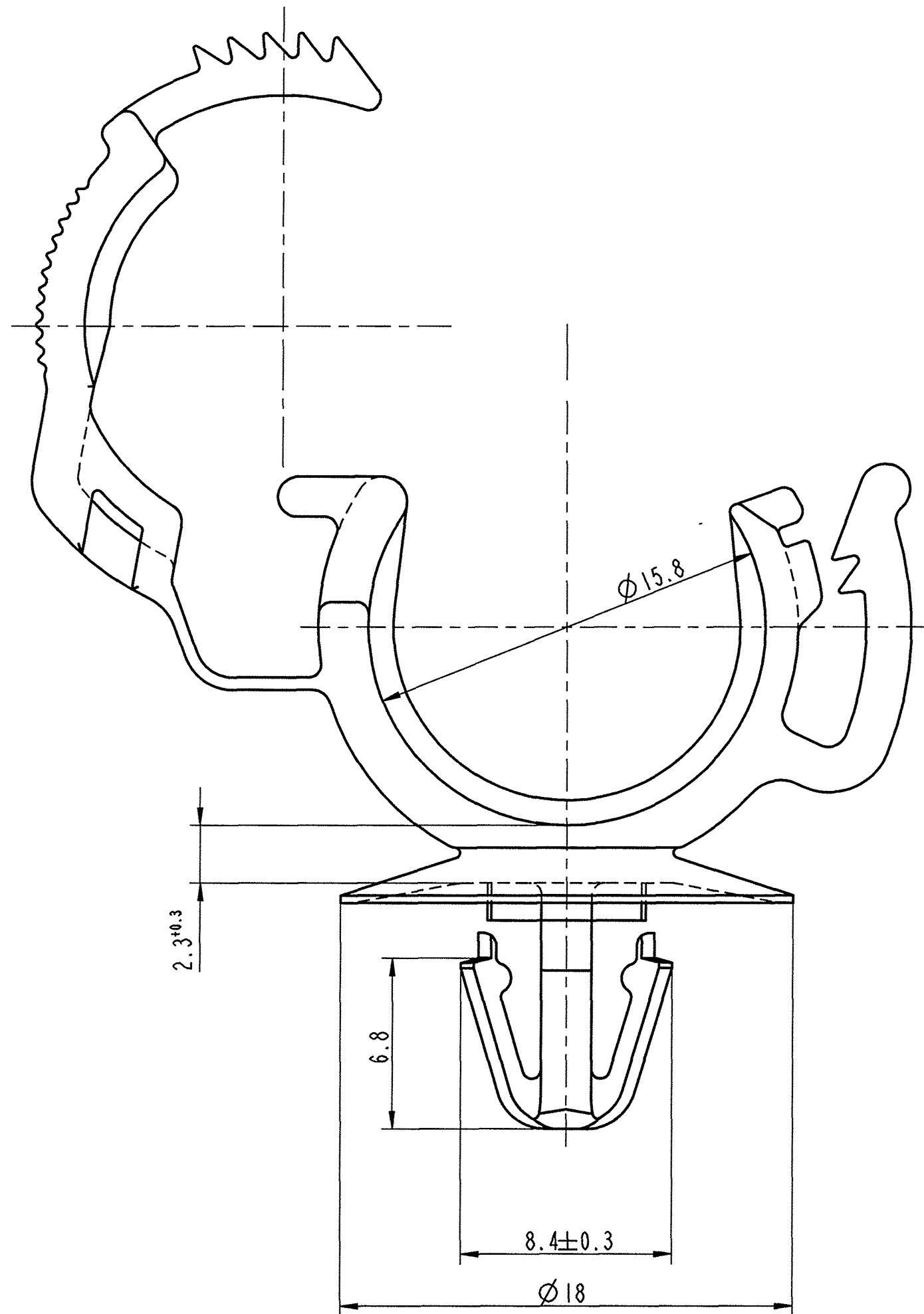
Kennzeichnung: / Identification:

Hersteller - Code VW 105 40 > RAY <

Mfr. - Code

Werkstoff - Code VDA 260 > PA 66 <

Material - Code



Befest. - Loch =  $\varnothing 6,5^{+0,2}$   
Fastening hole  
Befest. - Dicke = 2.5  
Fastening thickness

passend fuer / suitable for

Wellenschlauchgröße Corrugated hose size	Außen - $\varnothing$ Outside - $\varnothing$
13	$\varnothing 15.8 \pm 0.3$

Ca	Indexreform - SAP / keine Teileänderung	11.01.07	sp
Ind.	Ind. / Description	Ind. / Description	Ind. / Description

Änderungen / Modifications

Format DIN A2 **A Raymond**  
SPEZIALBEFESTIGUNGSSYSTEME WELTWEIT / ENGINEERED FASTENERS WORLDWIDE

Bei Verständnisproblemen beantragen Sie bitte beim Absender die deutsche Fassung vor jeder Anwendung.  
"CONDITIONS OF USE"  
This drawing and all information (the "Drawing") disclosed are the exclusive property of A.Raymond. By using this drawing the Addressee acknowledges and accepts that this Drawing (1) is covered by A.Raymond' intellectual property rights or know-how and (2) is provided under the following conditions who represent a Deposit Agreement. This Drawing is for Addressee' internal use only limited to its estimation. Without prior written consent of A.Raymond, no permission or rights for any purpose, is hereby granted, such as, without any limitation, (1) the copy, in part or entirely (2) and/or the presentation, in part or entirely, to any other third party outside the Addressee' company or in the company but with no interest (3) and/or the distribution of the Drawing, in part or entirely, in any medium (4) and/or the creation of any derivative work. In case of breach of these conditions, Addressee shall indemnify A.Raymond from and against all damages (compensatory or consequential), costs, expenses and charges, caused or arising out of or attributable to its willful misconduct, fraud, negligence, infringement of A.Raymond' Intellectual Property rights. If the Addressee does not accept these conditions, please notify A.Raymond' sender immediately.

Dateiname/ Filename	CAD-PE: 018890_C.01	Proj.-Nr./ Proj.-No.	7922-K	RASCH- Code	BADA-
Ersatz fuer/ Substitute for	18890.529 Index 2 vom 11.05.1999	Proj.-No.	7922-K	RASCH- Code	BADA-
Schätzrechte/ Patent rights	vorbehalten / all rights reserved				

Gepr./ App.	F.-gepr./ Production	Q.-gepr./ Quality	S.-gepr./ Patent app.
Maßstab / Scale	Allgem.Tol. wenn nicht anders angegeben/ General tol. unless otherwise specified		Datum/ Date
5:1	siehe Tabelle / see table		11.01.2007

Oberflächenbehandlg./ Finish	-	Kennzahl/ Code number	-
Werkstoffbehandlg./ Material treatment	-	Dicke/ Met. Thckn.	DIN EN 10 140

Werkstoff/ Material	PA 66 wstab. tr.schlagzaeh PA 66 dry impact strength, heat stabilized	Met.-Code	2529
------------------------	--	-----------	------

Bezeichnung/  
Partname  
**Wellenschlauchclip  
Corrugated hose clip**

Teil-Nr./ Part-No.	018890 000 VW-Nr. 7D0 972 821	C
-----------------------	----------------------------------	---

>400 <= 1000	±2
>120 <= 400	±1.5
> 30 <= 120	±1
> 6 <= 30	±0.5
<= 6	±0.25
Winkel / Angle	±3°

Allgemeintoleranzen fuer  
Nennmaße ohne Toleranz.  
General tolerances for  
nominal dimensions without  
specified tolerance.

endgültige Toleranzfestlegung  
nach Erprobung der Serienteile  
final definition of tolerances  
after testing the serial parts

im Auswerferbereich keine Radien  
no radii in the area of ejector

018890 000	schwarz black	SW	7000
Teil-Nr. / Part-No.	Oberfläche / Farbe / Finish / colour	Kennzahl / Code number	Ausführung / Execution