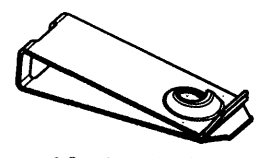
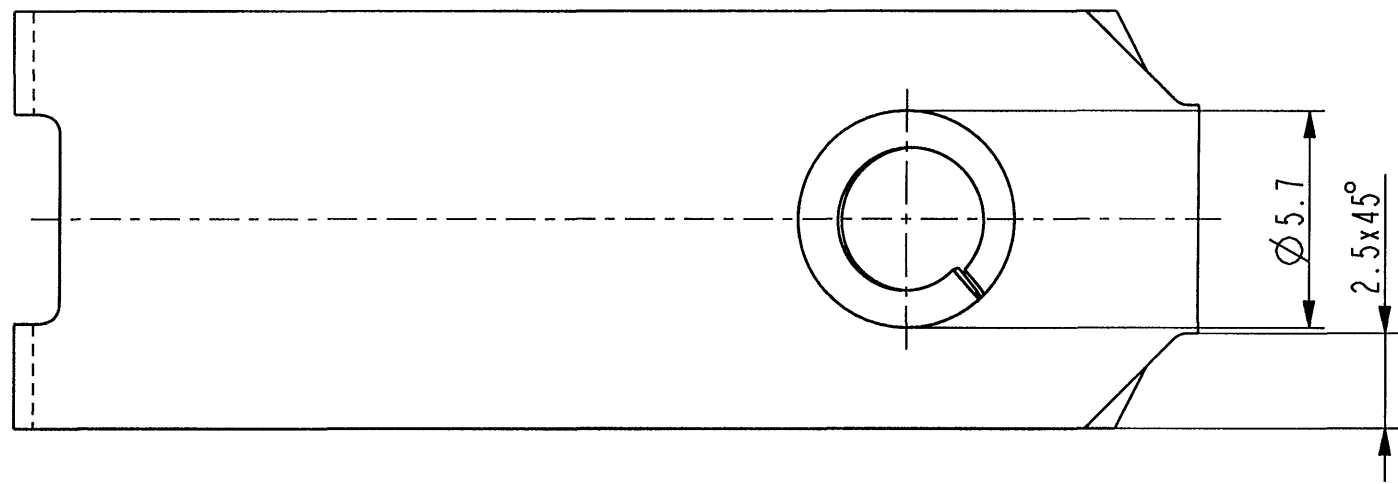
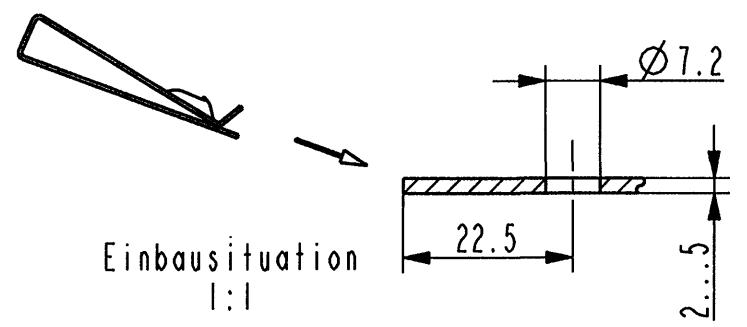
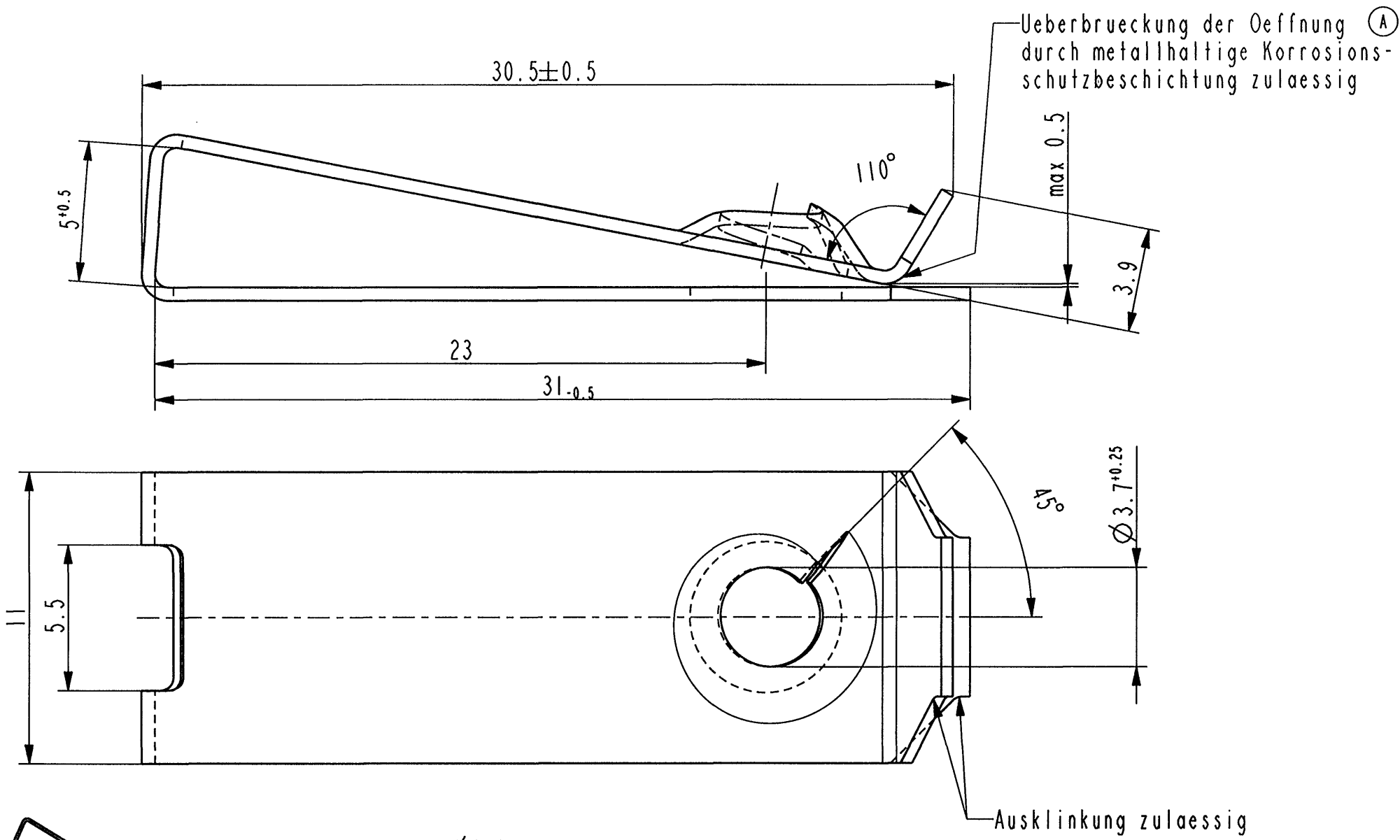



Vor Auslegung einer automatisierten Verarbeitung des Teils sollte Ruedksprache mit Fa. A.Raymond gehalten werden.
Fully automatic processing of the part requires prior consultation with A.Raymond GmbH.

-	-	-	-	-	-
-	-	-	-	-	-
-	-	-	-	-	-
-	-	-	-	-	-
-	-	-	-	-	-
-	-	-	-	-	-
-	-	-	-	-	-
-	-	-	-	-	-
-	-	-	-	-	-
-	-	-	-	-	-
-	-	-	-	-	-
-	-	-	-	-	-
-	-	-	-	-	-
-	-	-	-	-	-
-	-	-	-	-	-
-	-	-	-	-	-
A	2x	Art.-Nr. gem. SAP geaendert;	13.10.05	mj	/
-	-	Oberflaechenvariante u. Bemerkung hinzuef.	-	-	-



3D-Ansicht
1:1



Ind.	kommt vor/ bzw. oft	Beschreibung / Description	Datum/Date	Name
Aenderungen / Modifications				
				
Format DIN A3		SPEZIALBEFESTIGUNGSSYSTEME WELTWEIT / ENGINEERED FASTENERS WORLDWIDE		
Bei Verstaendnisproblemen beantragen Sie bitte beim Absender die deutsche Fassung vor jeder Anwendung. "CONDITIONS OF USE" This drawing and all information (the "Drawing") disclosed are the exclusive property of A-Raymond. By using this Drawing the Addressee acknowledge and accept that this Drawing (1) is covered by A-Raymond' intellectual property rights or know-how and (2) is provided under the following conditions which represent a Deposit Agreement. This Drawing is for Addressee' internal use only limited to its estimation. Without prior written consent of A-Raymond, no permission or rights for any purpose, is hereby granted, such as, without any limitation, (1) the copy, in part or entirety (2) and/or the presentation, in part or entirety, to any other third party outside the Addressee' company or in the company but with no interest (3) and/or the distribution of the Drawing, in part or entirety, in any medium (4) and/or the creation of any derivative work. In case of breach of these conditions, Addressee shall indemnify A-Raymond from and against all damages (compensatory or consequential), costs, expenses and charges, caused or arising out of or attributable to its willful misconduct, fraud, negligence, infringement of A-Raymond' intellectual property rights. If the Addressee does not accept these conditions, please notify A-Raymond' sender immediately.				
Dateiname/ Filename		CAD-PE: 017142_C.01		
Ersatz fuer/ Substitute for	017142 v. 20.10.1993	Proj.-Nr./ Proj.-No.	EM 9602	RASCH-Code
				AAAAE
		Vol.(mm ³)	Gewicht/ Weight (g)	
Schutzrechte/ Patent rights				
Gepr./ App.	F.-gepr./ Produktion	O.-gepr./ Quality	S.-gepr./ Patent app.	
Maassstab / Scale		Allgem.Tol. wenn nicht anders angegeben/ General tol. unless otherwise specified	Datum/ Date	13.10.2005
5:1		±0.3 / ±5°	Gez./ Drawn	M. Junge
Oberflaechenbehandlg./ Finish	verzinkt / gelbchromatiert			Kennzahl/ Code number
				3000
Werkstoffbehandlg./ Material treatment	zwischenstufenverguetet 375 ... 475 HV 5			Bleedicke/ Mat.Thickn. DIN EN 10 140
				0.5
Werkstoff/ Material	C 67 S DIN EN 10 132-4			Mat.-Code
				1000
Benennung/ Partname				
Blechmutter fuer Gewinde EN ISO 1478-ST4.8				
Teil-Nr. / Part-No.		017142 001		
				C

<http://www.cergy-vis.fr>
[CERGY-VIS]
 ET SI ON PARLAIT SERVICE

① 017142 002	metalh. Korrosionsschutzbeschichtung, Farbe schwarz; GZ	5453
Teil-Nr. / Part-No.	Oberflaeche / Farbe / Finish / colour	Kennzahl / Code
Ausfuehrung / Execution		