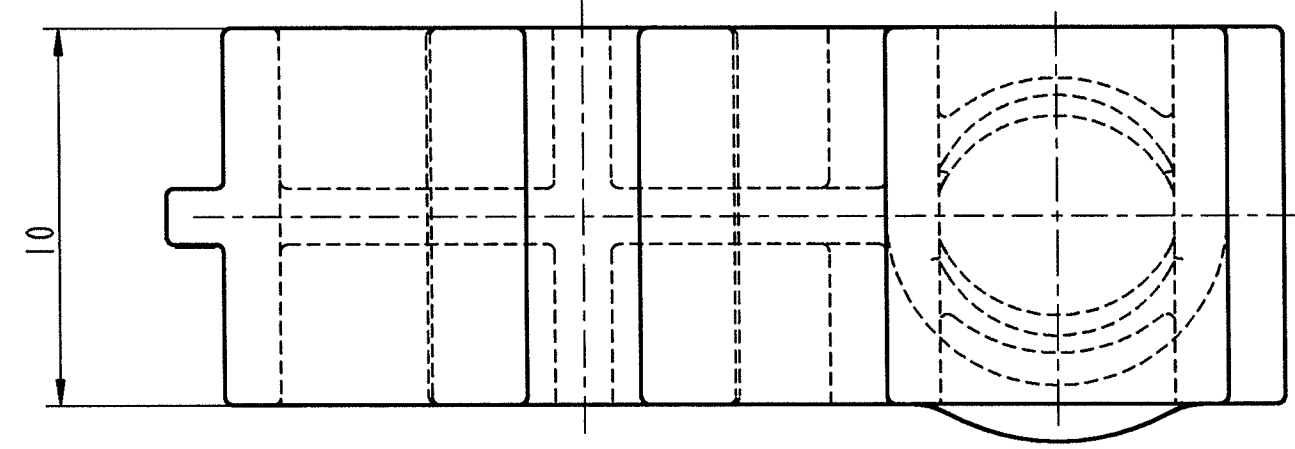
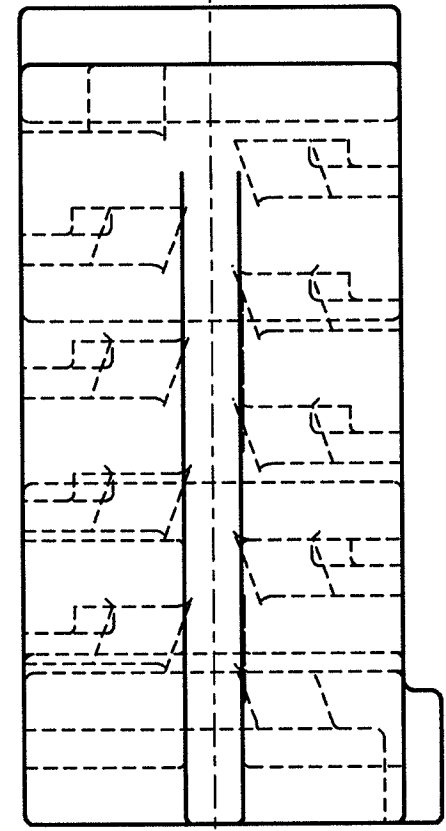
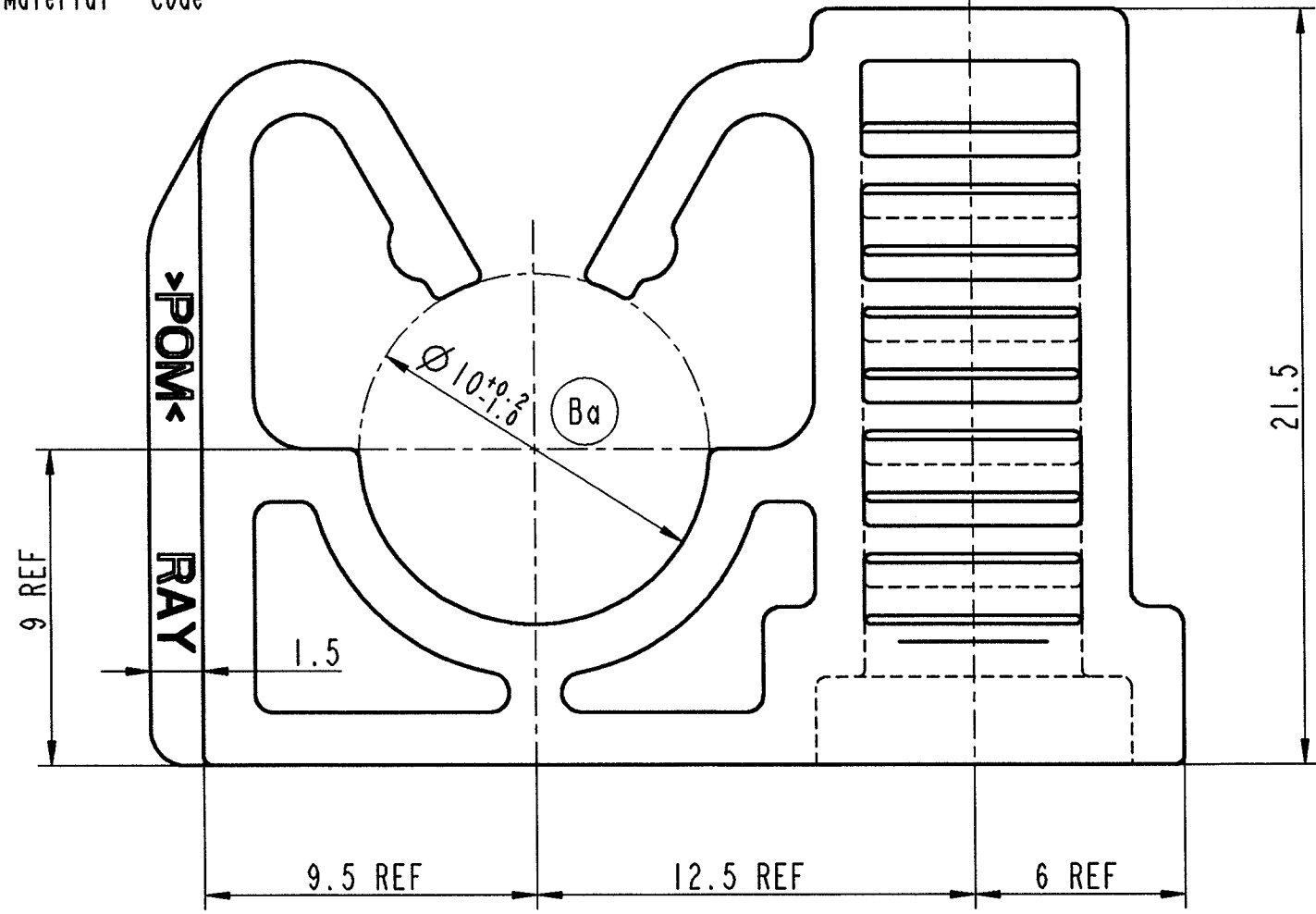


Kennzeichnung: / Identification:
 Hersteller - Code VW 105 40 - RAY
 Mfr. - Code
 Werkstoff - Code VDA 260 >POM <
 Material - Code



>400 <= 1000	±2
>120 <= 400	±1.5
> 30 <= 120	±1
> 6 <= 30	±0.5
<= 6	±0.25
Winkel / Angle	±3°

Allgemeintoleranzen fuer
 Nennmaesse ohne Toleranz.
 General tolerances for
 nominal dimensions without
 specified tolerance.

Nicht bemaßte Geometrien
 dem Datensatz entnehmen
 Undimensioned design models to be
 taken from the data record

REF Theoretische Maße,
 dienen nur der Werkzeugherstellung /
 theoretical dimensions are only
 used for the tool production

endgueltige Toleranzfestlegung
 nach Erprobung der Serienteile
 final definition of tolerances
 after testing the serial parts

206941 000	schwarz black	SW	7000
Teil-Nr. / Part-No.	Oberflaeche / Farbe / Finish / colour	Kennzahl / Code number	
	Ausfuehrung / Execution		

3D-Darstellung
 M 1:1

passend fuer Gewindebolzen
 M6x18 = N 906 547 04
 passend fuer
 PA-Leitung Ø10±0.1

Ca	2x	Werkstoff geaendert (war PA 66 wstb. tr.schl.)	11.08.06	Vo
-	-	Kundenteile-Nr. geaendert;	-	-
Ba	2x	Werkstoff geaendert, Toleranz +0.2 hinzu;	20.06.06	Vo
Aa	-	Erstfreigabe	05.04.06	Vo
Ind.	Samt var/ how often	Beschreibung / Description	Datum/Date	Name

Aenderungen / Modifications

Format DIN A3
 SPEZIALBEFESTIGUNGSSYSTEME WELTWEIT / ENGINEERED FASTENERS WORLDWIDE

Bei Verstaendnisproblemen beantragen Sie bitte beim Absender die deutsche Fassung vor jeder Anwendung.
 "CONDITIONS OF USE"
 This drawing and all information (the "Drawing") disclosed are the exclusive property of A-Raymond. By using this Drawing the Addressee acknowledge and accept that this Drawing (1) is covered by A-Raymond' intellectual property rights or know-how and (2) is provided under the following conditions who represent a Deposit Agreement. This Drawing is for Addressee' internal use only limited to its estimation. Without prior written consent of A-Raymond, no permission or rights for any purpose, is hereby granted, such as, without any limitation, (1) the copy, in part or entirely (2) and/or the presentation, in part or entirely, to any other third party outside the Addressee' company or in the company but with no interest (3) and/or the distribution of the Drawing, in part or entirely, in any medium (4) and/or the creation of any derivative work. In case of breach of these conditions, Addressee shall indemnify A-Raymond from and against all damages (compensatory or consequential), costs, expenses and charges, caused or arising out of or attributable to its willful misconduct, fraud, negligence, infringement of A-Raymond' Intellectual Property rights. If the Addressee does not accept these conditions, please notify A-Raymond' sender immediately.

Dateiname/ Filename	CAD-PE: 206941_C_01		
Ersatz fuer/ Substitute for	54226-EK Entwurf vom 09.03.06	Proj.-Nr./ Proj.-No.	54226-K
		RASCH- Code	BAEA-
		Gewicht/ Weight (g)	-

Schutzrechte/ Patent rights	vorbehalten / all rights reserved		
Gepr./ App.	F.-gepr./ Produktion	Q.-gepr./ Quality	S.-gepr./ Patent app.

Maßstab / Scale	Allgem.Tol. wenn nicht anders angegeben/ General tol. unless otherwise specified	Datum/ Date	05.04.2006
5:1	siehe Tabelle / see table	Gez./ Drawn	Vollmer

Oberflaechenbehandlg./ Finish	-	Kennzahl/ Code number	-
----------------------------------	---	--------------------------	---

Werkstoffbehandlg./ Material treatment	-	Blechedicke/ Mat.Thickn. DIN EN 10 140	-
---	---	--	---

Werkstoff/ Material	POM C Standard	Mat.-Code	5555
------------------------	----------------	-----------	------

Benennung/
Partname
Leitungshalter
 clip

Teil-Nr./ Part-No.	206941 000	Ca	C
	Audi-Nr. 8K0 201 449 R	Ca	